

# Playbill

Montford Park  
Players 54th  
Season



## THE WONDERFUL WIZARD OF OZ

by V. Glasgow Koste

Produced by special arrangement with  
THE DRAMATIC PUBLISHING COMPANY of  
Woodstock, Illinois

Season Sponsors:  
Leaven & Associates

EXPLORE  
ASHEVILLE

POWERED BY Buncombe County Tourism  
Development Authority

May 1 - 30, Friday-Sunday at 7:30pm, Hazel Robinson Amphitheatre, 92 Gay Street, Asheville, NC



This project receives support from the North Carolina Arts Council, a division of the Dept of Cultural Resources, with funding from the National Endowment for the Arts, through ArtsAVL.

EXPLORE  
ASHEVILLE

POWERED BY  
Buncombe County Tourism  
Development Authority

POWERED IN PART BY  
**Travel & Hospitality**

Find out how visitors benefit our community.

ALWAYS  
ASHEVILLE



**LEARN MORE AT:**

[ExploreAsheville.com/Value-Visitor-Economy](https://ExploreAsheville.com/Value-Visitor-Economy)

# UNC Asheville congratulates the class of 2026!



UNIVERSITY of NORTH CAROLINA  
ASHEVILLE



THE MONTFORD PARK PLAYERS PRESENTS

# *The Wonderful Wizard of Oz*

*By*

*V. Glasgow Koste*

*Directed by*

*Erin McCarson*

*Caitlin Marshall, Stage Manager*

*Produced by special arrangement with*

*THE DRAMATIC PUBLISHING COMPANY of Woodstock, Illinois*

# CAST

Frank Baum/Oz- George Dippold  
Dorothy- Lauren Otis  
Scarecrow- Paula O'Brien  
Tin Woodman- Katie Alexander  
Lion- Goober Berdine  
Toto- Lucy Hester  
The Witches- Christine Hellman  
Uncle Henry/Guard- Strother Stingley  
Aunt Em- Jill Winkoff  
The Stagehand- Reese Pifer  
Stagehand/Lion Understudy- Austin Tate

# PRODUCTION STAFF

Director- Erin McCarson  
Stage Manager- Caitlin Marshall  
Assistant Stage Manager- Noelle Lane  
Choreographer- Kristi Deville  
Costumer- Kelly Chambers  
Lighting Designer- Jason Williams  
Set Designer- Malorie McGalliard  
Olivia Emery – Costume Assistant  
Penelope Hellman - Assistant to the Assistant Stage Manager

# TO OUR PATRONS

- Thank you for joining us this evening. We hope you enjoy our 2026 Season as presented by The Montford Park Players, North Carolina's longest running Shakespeare Festival.
- There will be one twenty-minute intermission. Concessions will be available at the entrance to the amphitheatre. Many thanks to The Matt & Molly Team for sponsoring Shakespeare's Tavern, where you will find a delightful selection of wines and local beers on tap.
- We are pleased to accept all major credit/debit cards, cash, checks, Venmo and PayPal for your donations and concessions. One of our actors will be in the audience each night with a credit card reader for your convenience.
- Please turn the volume off on all cell phones and pagers to avoid distracting your fellow audience members.
- Flash photography is not permitted in the theatre.
- Canine companions will be given a treat at the concession stand.
- Unattended children will be given a double espresso, an energy drink and a free puppy .
- The Montford Park Players is going GREEN! Please help us conserve the environment by depositing your empty cans in the marked recycle bins

Please feel free to contact us with any questions or comments by phone at (828) 254-5146, email at [info@montfordparkplayers.org](mailto:info@montfordparkplayers.org), or snail mail at Montford Park Players, PO Box 2663, Asheville NC 28802-2663. You can also follow us on Facebook (Montford Park Players) or on Twitter (@MontfordPlayers) or on Instagram (@montfordparkplayers).

# WELCOME FROM THE EXECUTIVE DIRECTOR



On behalf of the board of directors and the members of The Montford Park Players, I want to personally welcome YOU to our 54th season of free theatre, sponsored by ExploreAsheville!

We're pleased to tell you that ALL our shows are free-of-charge – all season long! We at MPP envision a world in which everyone can experience exceptional live theatre, regardless of the ability to pay. Therefore, all of our shows are donation only. "Pay what we're worth." "Pay what you can." Some may even call it crazy. Call it what you will – and enjoy the show!

## Here's our summer 2026 schedule:

- May 1 – 30 The Wonderful Wizard of Oz (non-musical version) directed by Erin McC Carson – 5 weeks/14 performances
- June 5 – 27 Othello directed by Stephanie Hickling-Beckman – 4 weeks/11 performances
- July 1 – Aug 1 Taming of the Shrew directed by Jason Williams – 5 weeks/14 performances
- Aug 7 – 29 The League of the Scarlet Pimpernel – World Premiere, directed by David Doersch – 4 weeks/11 performances
- Sept. 4 – 26 Romeo & Juliet directed by Kristi DeVille – 4 weeks/11 performances
- Oct. 2 – 24 The Hope of Oz – World Premiere, directed by Gabby Bailey – 4 weeks/11 performances

All performances are Friday, Saturday and Sunday, starting at 7:30 pm. Final show for each run is on a Saturday.

Making the most of your visit:

We want you to fully enjoy your experience with us. Feel free to bring a picnic and your favorite beverage, or purchase wine, sodas, local beers and snacks at our concession cart. Four-legged friends are always welcome! (There are treats for them at the concession stand, too!)

We are so grateful to our current donors, sponsors, and advertisers and YOU, our faithful audience, without whom we could not exist. Now sit back, relax, and be ready to laugh, cry, and be entertained as the curtain rises on another great production by the Montford Park Players.

*John Russell*  
*Executive Director*



**MONTFORD PARK**  
**PLAYERS**

# MEET THE CAST & CREW



thanks to Erin, Alex, the cast and crew, and her crew of furry misfits for all the love and support.



Jill Winkoff (Aunt Em) is super excited to be joining Montford Park Players for the first time! Hailing from New Jersey, recent credits include Vera/Evil Gabby in *She Kills Monsters* and Seven in *Executive Decisions*, an original one act, both at Colonial Playhouse in Phila, PA. Jill is thrilled to have the chance to join in this iconic show with a fun twist! Shoutout to the cast and crew for being so welcoming on her first show and for the education about bears!



Strother Stingley (Uncle Henry/Guard) This is Strother's first production with The Montford Park Players. He's absolutely thrilled to be here. He's also going to keep referring to himself in the third person for some reason. Strother has been doing local/regional theatre since 2004 (mostly musicals and mostly comedic roles), he toured for several years, and now he has a ceramics business called The Eclectic Epileptic Ceramics. He has had to pull back from doing shows since he started getting The Siezies and discovered a little benign brain tumor in late '20. Sometimes the right director and circumstances come along and he's able to be accommodated. Seeing him onstage is seeing accessibility for disabled folk. He's unfathomably grateful for this Oz Family and for this opportunity.

So much love to them, you, and y'all/you'ns.



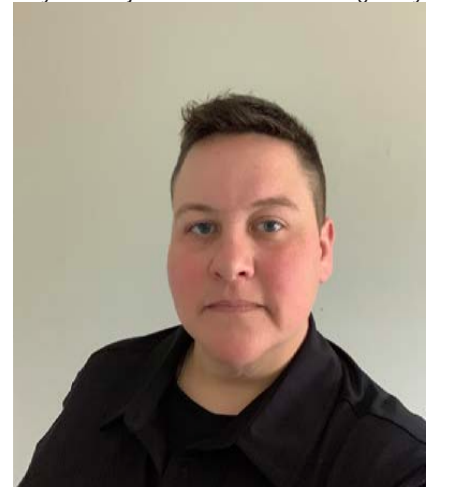
Austin Tate (Stagehand/Lion Understudy) spent many years working behind the scenes in Hollywood, first setting meetings and keeping schedules, then developing projects and shaping made-for-TV movies. Eventually leaving the entertainment industry, they spent several years traveling the country doing seasonal work and bizarre gigs before settling down in Asheville. They have been living and nannying here for over 3 years and have finally returned to storytelling and entertainment. This production marks their first time in front of the camera, or curtain as it were, and they are delighted to be among such fantastic entertainers performing for their community and neighbors.



Reese Pifer (the Stagehand) is excited to be a part of her first show at Montford! She has most recently performed in *The Best Christmas Pageant Ever*, *Footloose*, and *The Lightning Thief*, at HART Theater in Waynesville. As well as performing, she has recently costumed productions of *Legally Blonde jr.* and *Beetlejuice* at HART, and teaches dance classes for all ages! This fall she will be starting at UNC Greensboro to continue her education in performance, costume design, and Spanish.



Katie Alexander (Tin Woodman) Katie is so happy to be back on the Montford stage this year! Recent previous shows include *"Sirenium"* with Skysail Theatre, *"Improvized Horror"* with Adesto Theatre, *"A Midsummer Night's Dream"* with Shakespeare and Friends, *"Oklahoma"* with SART, *"Romeo and Juliet"* with Nemesis Theatre, and *"Henry IV"* and *"Edward II"* with Montford. She also performs Improvised Musical Theatre monthly-ish with Misfit Improv. She's wildly grateful for the heart that this show has, and for the people in her life who regularly oil her joints when she's feeling rusty..



Goober Berdine (Cowardly Lion) is excited to be back at Montford and to start the season off with this wonderful show! Recently she played Benedick in *"Much Ado"*, Nick Bottom in *"A Midsummer Night's Dream"*, Fight Corps in *"She Kills Monsters"*, and Isaac in *"Book of Will"*. She feels incredibly lucky to portray such a well-known character and even luckier to be surrounded by this amazing cast and crew. Please enjoy the show! WE'RE OFF!!

George Dippold (Frank Baum/Oz) is from Virginia, is a James Madison University Theatre alum, and just relocated to Appalachia from Omaha, Nebraska. He served a year with Charleston Stage's Resident Acting Company, toured nationally for three years with Virginia Repertory Theatre, and spent three summers performing in the Scioto Society's outdoor *"Tecumseh!"* and Shakespeare seasons. Recent Favorites: Brian Lemon, *"Stuck with Lemons"* (Great Plains Theatre Commons & Shelterbelt Theatre); Macduff, *"Macbeth"* (BLUEBARN Theatre); Sir Toby Belch, *"Twelfth Night"* (Old School Shakespeare Omaha); 2nd Headmaster & A Very Tall Man, *"Puffs..."* (Creighton University); Krampus, *"Christmas Spirit"* (Brigit St. Brigit Theater).



Lauren Otis (Dorothy) holds a BFA in Acting from Arcadia University and has been very active in the WNC theatre arts community for the past 7 years. Past favorite credits include *Miss Julie* (Miss Julie), *Terms of Endearment* (Emma), *Life Sucks* (Ella), *Richard III* (Queen Elizabeth), *The Gods of Comedy* (Thalia), *Miss Bennet: Christmas at Pemberley* and *The Wickhams: Christmas at Pemberley* (Lydia Wickham). Big



**The outdoor theatres listed here are only a small fraction of theatres across the country where you can experience thrilling live performances in an amazing variety of venues. Discover beautiful parks, desert canyons, mountainside theatres, and performances by the sea. We hope that you will join us for an evening under the stars!**

**Montford Park Players:** North Carolina's longest running Shakespeare Festival, now in its 53rd season, May 9 - Oct 25, Fri-Sun at 7:30 pm. All shows are FREE. [www.montfordparkplayers.org](http://www.montfordparkplayers.org) 828-254-5146.

**The Lost Colony:** The story of the first attempt of English colonization in America, told on the site where these events actually occurred, now in its 88th Anniversary season. The 2025 season runs from May 31st-August 23rd, Monday-Saturday at 8:30pm. 1409 National Park Drive, Manteo, NC 27954. [www.thelostcolony.org](http://www.thelostcolony.org) or 252-473-6000.

**Unto These Hills:** The compelling story of the Eastern Band of Cherokee Indians from first contact with Europeans through the removal west on the infamous Trail of Tears. The drama celebrates its 75th Anniversary Season in 2025, including a special recognition on July 1st. The 2025 season runs from May 31st - August 23rd, Monday - Saturday at 8pm. 688 Drama Rd, Cherokee, NC 28734. [www.cherokeeadventure.org](http://www.cherokeeadventure.org) or 828-497-2111.

**Shakespeare In Delaware Park:** Celebrating 50 years of FREE Shakespeare in Western New York. 2025 season-TWELFTH NIGHT June 19-July 13 and RICHARD III July 24-August 17 Tuesday-Sunday 7pm. 199 Lincoln Parkway Buffalo, NY 14222 on Shakespeare Hill [www.shakespeareindelawarepark.org](http://www.shakespeareindelawarepark.org) 716-856-4533.

**TEXAS Outdoor Musical:** "TEXAS" fictionalizes the stories, struggles, and triumphs of the settlers of the Texas Panhandle in the late 1800's! Featuring vibrant characters, song, dance, and special effects set against the backdrop of the beautiful Palo Duro Canyon State Park, TEXAS is celebrating its 59th season in 2025. Performances 6 nights a week in June-August at 8:00pm. 1514 5th Ave, Canyon, TX 79015. [www.texas-show.com](http://www.texas-show.com) or 806-651-2181.

**Piedmont Shakespeare Company:** Celebrating its inaugural season of free Shakespeare in the Piedmont region of North Carolina with HAMLET, touring Alamance, Guilford, and Forsyth counties, June 12-29. [www.piedmontshakes.org](http://www.piedmontshakes.org) 216-374-8000

**The Laura Ingalls Wilder Pageant:** An outdoor drama sharing the childhood story of Laura Ingalls Wilder and her family in Walnut Grove, Minnesota during the late 1800's. Grasshoppers, prairie fires and the Olesons help tell the story in its 47th year during the first three weekends in July. More information check the website at <https://walnutgrove.org/pageant/> or follow us on Facebook.

**Tecumseh!** Witness the epic life story of the legendary Shawnee leader as he struggles to defend his sacred homelands in the Ohio country during the late 1700's. The 2025 season runs from June 12-August 31st, Tuesday-Saturday at 8:00pm. 5968 Marietta Rd. Chillicothe, OH 45601. [www.tecumseh-drama.com](http://www.tecumseh-drama.com) or 740-775-4100.

**SETC is home of the National Conference on Outdoor Theatre. For over 60 years, this organization has provided a professional network for theatres. To learn more, contact us at [outdoortheatre@setc.org](mailto:outdoortheatre@setc.org), or visit [setc.org/national-conference-on-outdoor-theater/](http://setc.org/national-conference-on-outdoor-theater/).**



# MEET THE CAST & CREW



Lucy Hester (Toto) - Lucy is thrilled to be returning to the Montford Park Players stage! Recent roles include last season's *The Merry Wives of Windsor* (Host Fuller), *Henry V* (Katherine) and *Vanities* (Mary) at Parkway Playhouse. She is honored to be able to help bring this silly, wonderful, and enduring story to life. She would like to thank her family, friends, and her partner, Jack, for their unwavering love and support.



Paula O'Brien (Scarecrow) has been a frequent performer in the Asheville theater scene since moving from the Northeast in 2017. Her most recent credits include portraying both mothers in *Tonya and Nancy: The Rock Opera*. She is incredibly grateful for the opportunities she's found in North Carolina and gives a heartfelt thanks to her husband, Andrew, for his unwavering support..

*the Mountain* (SART), *How to be a Human* (NC Stage). [www.ErinMcCarson.com](http://www.ErinMcCarson.com)



Caitlin Marshall (Stage Manager)- Caitlin got her start with the Montford Park Players in 2006 with *A Christmas Carol* and has been happy to call Montford her theatre home ever since. Some of her favorites with the Montford Park Players include: *Living Dead in Denmark*, *Alice's Adventures in Murderland*, and *She Kills Monsters*. Other credits include productions with: Dark Horse Theatre, Attic Salt Theatre Company, the Magnetic Theatre, and Multiverse Theatre

security advocate, partnering with organizations across the country to address the root causes of hunger and build stronger, more equitable communities. This production marks her debut as a set designer in Asheville, and she's thrilled to be part of the magic (and mild chaos) of live theatre.



Jason Williams (Lighting Design) is an actor, director and designer that works for many local theatre companies around Asheville and WNC. Recent designs include: *Next to Normal* and *The White Chip* at HART Theatre, *Silver in the Pines* for Asheville Contemporary Dance Theatre, *Appropriate* for Hendersonville Theatre, and *Hadestown Teen Edition* for Asheville Performing Arts Academy. He would like to thank you for coming to see the show tonight. He sees theatre as a valuable life experience and an important part of the cultural fabric. If you enjoyed tonight's show he encourages you to seek out other performances in our vibrant local theatre scene, and please consider an additional donation or sponsorship to keep the area theater scene thriving.



Christine Hellman (*The Witches*) is an actor, certified Lucid Body teacher, and Intimacy director based in Asheville North Carolina. This is her first production with Montford and what a treat to be here! Christine teaches workshops regionally centered around ensemble building and creating consent forward spaces. Acting credits include *People, Places, and Things* (Emma), *Down in the Holler* (Juniper), *Hurricane Diane* (Carol), *Cymbeline* (Imogen) *Midsummer For Haters* (Helena).



Erin McCarson (Director), former baby, is an actor, director, and writer based in WNC. Acting credits include: *Every Brilliant Thing*, *The White Chip*, *A Midsummer Night's Dream*, *Twelfth Night*, *Bop & Evey* (HART), *Romeo & Juliet*, *Cymbeline*, *Midsummer 4 Haters* (Nemesis Theatre), *Fire & Flood* (Sublime Theatre), *Oklahoma* (SART), *The Greatest Christmas Story Ever Told by Two People or A Christmas Carol?* (Calliope Stage), *New Queen's Eve*, *The Splatter Play* (Magnetic Theatre). Directing credits include: *The Best Christmas Pageant Ever*, *The Cake*, *The Gods of Comedy*, *Calendar Girls*, *A Christmas Story* (HART), *Smoke on*



Malarie McGalliard (Set Designer) After more than a decade as a devoted patron of Montford Park Players, Malarie is thrilled to finally trade her seat in the audience for a role behind the scenes. Transitioning from audience member to artist, she is excited to help bring stories to life through design. Malarie discovered her passion for storytelling while studying set and costume design at NC State University, where she contributed to several theatre productions and developed a deep appreciation for the arts. By day, Malarie works as a national food

Supporting Cultural Resources in WNC  
through partnership with organizations  
that place the arts at the center of  
thriving, healthy communities.



*The Seldoms photo by Andrew Glatt; courtesy of Trillium Arts*

**Generosity multiplied.**

[www.cfwnc.org](http://www.cfwnc.org)

# MEET THE CAST & CREW



the Theatre Department at Warren Wilson College and was the director of First Stage Youth Theatre.



Kelly Chambers (Costume Design)

Kelly is an Emmy and Costume Designers Guild Award Nominated Costume Designer who brings characters to life with a distinctive blend of style, storytelling, and playfulness. A graduate of Brown University with dual degrees in Ecology & Evolutionary Biology and Visual Arts, Kelly combines

an eye for natural detail with artistic vision. Her training at The Second City and background in improv and clown infuse her work with humor, heart, and humanity. Whether building a character from the ground up or enhancing a performance through wardrobe, Kelly brings creativity, precision, and joy to the stage and screen

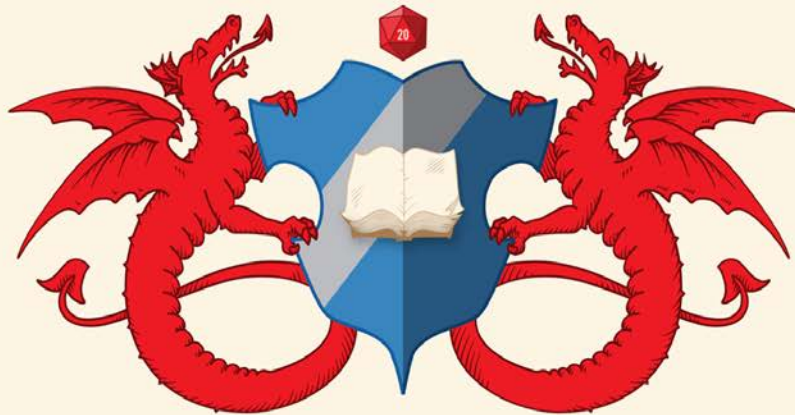


Noelle Lane (ASM) Noelle is excited to be back for a 3rd season with Montford. Previously you could have found them in the booth for *Book of Will*, and backstage as a

SM for *Midsummer Night's dream* and ASM for *She kills Monsters*. They hope you enjoy the show, watch out for Lions, Tigers, and Bears.



Penelope Hellman (Assistant to the Assistant Stage Manager) Penelope is a singer, actor, and all around creative. This is her first show at Montford and is so excited to be a part of this show! She is a sixth grader at Asheville Waldorf School. Recent credits include Pepper in *Annie Jr.* (APAA).



**THE WYVERN'S TALE**  
Games Fine & Sundry

347 Merrimon Avenue,  
Asheville, NC 28801  
828.505.7887  
[www.TheWyvernsTaleAVL.com](http://www.TheWyvernsTaleAVL.com)

*All the world's  
a game,  
and all the people  
players...*

Hundreds of Board Games,  
Role-Playing Games,  
Miniatures and Hobby Supplies,  
and over 1,000 square feet of gaming space!

OUR VOICE

## Courage in Bloom

Celebrate Our Voice's Impact in the Community

June 25, 2026 | 6 - 9:00 p.m.

HIGHLAND BREWING, ASHEVILLE

TICKETS ON SALE NOW.

[ourvoicenc.org/courage-in-bloom-2026](https://ourvoicenc.org/courage-in-bloom-2026)



 Want to become a  
Courage in Bloom Sponsor?

CHECK OUT AVAILABLE  
OPTIONS AND GET IN TOUCH:



# DRIVE RECOGNITION FOR THE ARTS

Show your support for  
North Carolina's arts everywhere you  
go with an Arts NC license plate.



[www.thecreativestate.org](http://www.thecreativestate.org)

*There's really*  
**NO PLACE  
LIKE HOME**

**I'm here for all your home financing needs!**

Whether you're a first-time buyer or  
seasoned buyer, want to refinance  
or renovate, each loan closed is a  
donation to Montford Park Players.  
Reach out today\*!

*Cody Fox*

Sr. Mortgage Banker  
828-380-9756

[codyfox@atlanticbay.com](mailto:codyfox@atlanticbay.com)

NMLS #1120052  
Licensed in FL, NC, SC, TN

\*(unless I'm backstage & then  
I'll reach back out tomorrow!)

 **Atlantic Bay**  
Mortgage Group





Check out  
our YouTube  
channel for  
synopses of  
our shows



INSPIRE. EDUCATE. ENTERTAIN.



2026 TICKETS ON SALE NOW!

[WWW.PARKWAYPLAYHOUSE.COM](http://WWW.PARKWAYPLAYHOUSE.COM) 828-536-5153

MPP Thanks These Local Businesses  
for Their Support





# ABOUT THE AUTHOR



V. Glasgow Koste (playwright) was born to actors James Glasgow and Vivian Marlowe. Koste has worked in the theatre all her life, acting, directing, writing and teaching. Honors and awards for playwriting include: AATE's Distinguished Play Award (*The Chicago Gypsies*); Indiana Arts Commission/National Endowment for the Arts Master Artist Fellowship for artistic excellence and achievement; Michigan Council for the Arts Individual Artist grant; selection for national showcases (AATE) in New York, Toronto, Boston and Chicago; listings in Theatre Communications Group's *Play Source*; winner of TADA's national contest; and the Chorperring Cup (AATE) for a body of outstanding plays. Koste has written many articles and a classic book on the creative process, *Dramatic Play in Childhood: Rehearsal for Life*. She has lectured and worked as a guest artist in the United States, Canada and Europe, most recently performing her one-act play, *I Remain ... J. Austen*, in Baltimore, Philadelphia, New York City, Chicago, Santa Fe, Seattle and St. Louis. Her plays, 12 of which are published, have been produced throughout the United States, in Canada and in Moscow. Koste received a bachelor's degree from Vassar College and a master's degree from Wayne State University, with further graduate study at Cornell, Northwestern and Indiana University. She studied acting with Stella Adler in New York and is a lifetime member of The Dramatists Guild.



# HOW MANY HAVE YOU SEEN?

## Histories

**King John**

**Richard II**

**Henry IV, Part 1**

**Henry IV, Part 2**

**Henry V**

**Henry VI, Part 1**

**Henry VI, Part 2**

**Henry VI, Part 3**

**Richard III**

**Henry VIII**

**Edward III** FF

## Tragedies

**Troilus and Cressida** PP

**Coriolanus**

**Titus Andronicus**

**Romeo and Juliet**

**Timon of Athens** PP

**Julius Caesar**

**Macbeth**

**Hamlet**

**King Lear**

**Othello**

**Antony and Cleopatra**

**Cymbeline** LR

## Comedies

**The Tempest** LR

**The Two Gentlemen of Verona**

**The Merry Wives of Windsor**

**Measure for Measure** PP

**The Comedy of Errors**

**Much Ado About Nothing**

**Love's Labour's Lost**

**A Midsummer Night's Dream**

**The Merchant of Venice** PP

**As You Like It**

**The Taming of the Shrew**

**All's Well That Ends Well** PP

**Twelfth Night**

**The Winter's Tale** LR PP

**Pericles, Prince of Tyre** LR FF

**The Two Noble Kinsmen** LR FF

*Note: Plays marked with LR are now commonly referred to as the "late romances". Plays marked with PP are known as the "problem plays". The three plays marked with FF were not included in the First Folio.*



hey, asheville!

**ER + URGENT  
PET CARE  
OPEN 24/7**

veg.com

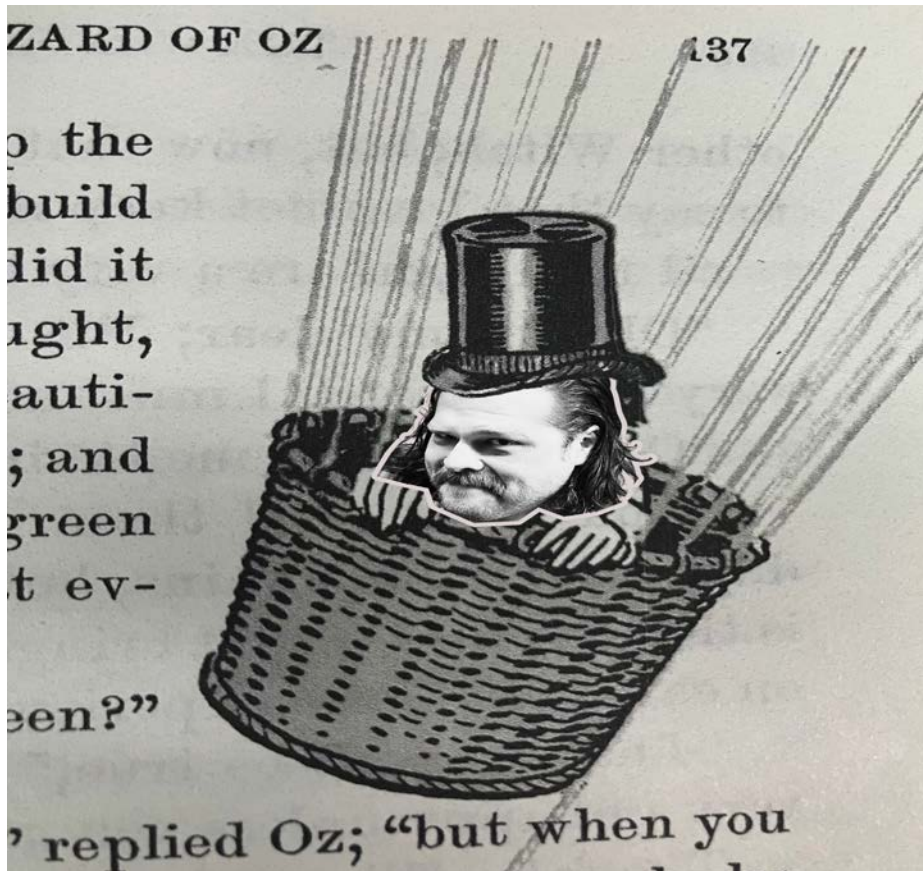


Montford Park Players

@MontfordParkPlayers



**venmo**



Scan this code to donate

Lost your way on the  
**Yellow Brick Road** of buying or selling?

Looking for some **brains**  
when it comes to pricing strategy?

Need a little **courage**  
to make a move?

Or maybe just looking for a  
**realtor with a heart?**

**Good News!**

You don't need  
a wizard.

*You just need*

**MATT & MOLLY**

828.210.1697



**THE MATT &  
MOLLY TEAM**  
*Moving the Mountains*

**kw**  
KELLERWILLIAMS.  
REALTY

# BRAVO TO OUR DONORS

## **CORPORATE SPONSORS**

Tod Leaven, Leaven & Associates  
Blu29 Boutique  
Jan Davis Tires  
Carol Goins, Attorney at Law  
Cody Fox  
Community Foundation of WNC  
OurVoice NC  
Little Jumbo Bar  
VEG ER for Pets  
Matt & Molly Team  
Explore Asheville  
UNCA Advancement Office  
Atlantic Bay Mortgage  
YWCA Advancement Office  
d&b audiotechnik

## **FIRST FOLIO CIRCLE (\$5,000-\$9,999)**

Virginia Luttrell  
Elaine & Stephen Klesius  
Henry LaBrun

## **SHAKESPEARE SOCIETY (\$1,000-\$4,999)**

HART Theatre  
Cody Fox  
Charles & Winslow Umberger  
Anna & Nathan Flax Foundation  
Ashley Bell  
Matt & Molly Team  
Atlantic Bay Mortgage Group  
Kathleen Cole  
Norm & Shannon Levine  
Veronica & Jack Hunter  
Greg Zack  
Matthew & Jewel Tavener  
Honor Moor and John Menkes  
Jeff Gottesman  
Mountaine Jonas  
William W. MacKay  
Yoke Mah  
Wallace & Catherine Shealy

Anne Toschi

## **PRODUCER'S CIRCLE (\$500-\$999)**

Sandra Fournies  
Karen & Scott Dedman  
Christopher Gilbert  
Layman Fund  
Stan Stockdale  
Andrea Blankinship  
The Whale  
Thomas DeAntonio  
Joshua S. Gettinger  
Anonymous  
Lori Ritter  
Elaine & Stephen Wiesenfeld  
Brian Davis  
Ron & Nancy Edgerton  
Benjamin & Andrea Frost  
Tedd Godager  
Patricia & Tom Hearron  
Stan Ingber and Laura Robbins  
Maria Lourdes Solares  
NC Literary & Historical Association  
Therese Shook

## **DIRECTOR'S GUILD (\$250-\$499)**

Steven Pennington  
Betsy Gumpert  
David Russell  
Michelle Spiegel  
Thomas & Linda Bushar  
Kathy Cole  
Jessica Frantz  
Grace & Don Repass  
Nancy Robinson  
Nichole Sumpter  
Avery Swihart  
Andrew Runkle and Christie Posner  
Jeff & Jan Dektor  
Sanjay Girme  
Monica Peltz

Robin Smith  
Kathleen Ayres  
Karissa Keen  
Dr. Jim and Lynn Karegeannes  
Kelly Lane  
Paula O'Brien and Andrew Opalka

## **PATRON (\$100-\$249)**

Our VOICE, Inc.  
Bonnie Hamrick  
John Baldwin  
Edward Breunig  
Joseph & Beverly Murphy  
Marjorie Portwood & Geoffrey Belet  
William Scarborough  
Neil Scheurich  
Leigh Schwietz and Matthew F. Yetter  
Emilie Soffe  
Courtland White  
Dana Vance  
Stephen Lapointe  
Ryan Stedwell  
Dr. Ken Tannenbaum  
Julia Akers  
Frank Jones  
Elana Lancaster  
Katie Langwell  
Kay Nash  
Madeline Rains  
James Storey  
Robert Winebarger  
Thomas Brown  
Anonymous Anonymous  
James & Linda McDonald  
David Broshar  
White Labs  
Jane Carducci  
Bill Chameides  
Michael Cleveland and Maria-Grazia Nunzi  
Melissa Drennan

Emily Gardner  
Jess Howard  
Marc Hunt  
Elizabeth Menser  
Stephen Boyer and Ruth Planey  
Thomas Brettingen  
David Eske  
John Galanti and John Hotchkiss  
Elisa Gold and Bradley Hughes  
Bruce & Anna Koloseike  
Bill & Audrey Kopp  
Alexandra & Terry McPherson  
Jeffrey Michel  
Judy & Ray Polinko  
Roberta L. Powers  
Jennifer Rennicks  
Ernie Thurston  
Jane Landwehr  
James Williamson Jr

## **LEADING ROLE (UP TO \$99)**

Carol Booth  
Beate Langsdorf  
Daniele Wikoff  
Gordon Jenks  
Mark Wright  
Sean Ahern  
Julie Atallah  
Robin DeVido  
Sue DiMaggio  
Katharine Jennings  
Lois Markham  
John & Susan Mycroft  
Thomas Brown  
Lenovo  
Sean Ballard  
Rebecca Crandall  
Stacey Figueroa  
Stephen Foss  
Jennifer Kerns  
David Lamoree  
John Martin  
Marsha Munn  
Elizabeth Oxley

# BRAVO TO OUR DONORS

Robert Pierce  
Selena Rhodes  
Deb Self  
Jeanette Teter  
Brad White  
Jessica Bridges  
Cathryn Carlson  
Christina Choe  
Ronda Mackey  
Michelle Vessely  
Judith DeCarme  
3M Gives  
Patricia & Glenn Bass  
Andrea Bishop  
Megan Davies  
John DeGelleke  
Catherine Jones  
Kathryn Langwell  
Molly Moor  
Cherie Morris and Randy Omark  
Jennifer Rish  
Susan M. Shope and Sarah M.  
Holly  
Katherine Stawiasz  
Chelsea Rath  
Naomi King  
Kristin Hessel  
Suzanne Murley  
Christopher Guggenheim  
Jim Smitherman  
Kathryn Martinuzzi  
David Kirby  
Bonnie Ferri  
Laura Lever  
Janice Warren  
Denise Beebe  
Valinda Bolton  
Harlan & Aiden Carson  
Christel Conwell

Elizabeth Costlow  
Myra Fuller  
Stephen Grubbs  
Stacy Hall  
Daniel Hey  
Stuart Johnson-Kwochka and An-  
nalee Kwochka  
Evan Lacy  
Whitney Lesnicki  
Abigail Miner  
Julie Montanea  
Sean Morris  
Janet Nostro  
Kristin Pedersen  
Shannon Radigan  
Kimberly Sills  
Nikki Smathers  
Carol-Ann Warr  
Kandance Norris  
Jonathan Wexler  
Kristi Mizen  
Myrtle Staples & Cecil Bennett  
David Allen  
Kathleen Askier  
Samantha Bloom  
Lisa Clowers  
Lawrence Cooper  
Carol Lee Craig  
Thomas & Cynthia Donahue  
Beth Eckstein  
Carolyn Griffith  
Bren Julian  
Pamela Lane  
Brendan Merithew  
Ailish OConnor and Timothy M.  
Robinson  
Harriet Sterling  
William R  
Conway Weary

Dan Williams  
Adam Gates  
David Baker  
Suzanne Berryhill  
Erin Leonard  
Randi Neff  
Richard L Schell  
Adorjan Toth  
Molly Zalewski  
Howard Brodt  
R Dedman  
Daniel Gainey  
Robert Lamme  
Lisa Laskowski  
Denise Lockett and David Honea  
John Mercer  
Jacob Oakes  
Carolina Perez  
Kathleen Phillips  
Stephanie & Fred Porter  
Heather Rimmer  
Robert Ulmer  
Kevin Brunk  
Peter Eisemann  
Jeffrey Huth  
Robert Jackson  
Noel Moreland  
Ken Raduazzo  
Richard Robinson  
Neva Shinder  
Melissa Wibom  
Galen Fiore Kral  
Robert Kelly  
Robert McGee  
Daniel Bridgeman  
Claudia Burke  
Donna Drake  
Rebecca Gross Alford  
William Lopez

McDaniel  
Andrea Michel  
Svijetlana Repic  
Grace Rice  
Emily Sepic  
Scott Smith  
James Smitherman  
Julie Speer  
Rob Whelan  
Carlos Gonzalez  
Anita Adams  
Robert Bullock  
Emily Dake  
Mack Strickland  
Micaela Strickland  
Rebecca Thornton  
Abigail J  
Farrel Zehr  
PayPal Giving Fund  
Samuel Cook  
Bobby Francis  
Eryn Starun  
Emilee Henrix  
Purplecat Networks

..... (List Complete as of April 10, 2026. If we made a mistake, please let us know.).....

We depend upon your generous donations to bring our shows to the mountains of WNC!  
Donations can be made here:

Online: <https://www.montfordparkplayers.org/donate/>  
Or by Venmo: @MontfordParkPlayers

By Check: Montford Park Players, PO Box 2663, Asheville NC 28802-2663

# DIRECTOR'S NOTE

Dear Friends,

Welcome to Oz!

A world where play is taken seriously, vulnerability is not hidden, and kindness becomes its own kind of magic. A place that exists both within our story and in this very theater we share tonight.

The Wonderful Wizard of Oz is a story of discovery. Not only of a magical world, but of the self and of one another. Our hero friends do not actually gain anything new, instead they help each other shine light on what has always been within. The actors bringing them to life have done the same, approaching this work with openness, curiosity, and great care for one another.

Creating this show has been a collaborative labor of love. I have deep affection and gratitude for this cast, who have made their own kind of magic by sharing their authentic selves so generously with one another and with this space. To the cast, YOU are my why. Thank you for playing with me!

As you leave the theater tonight, I hope you carry a sense of wonder, joy, and perhaps a renewed belief in what is already within you. Brains, hearts, courage, and even the feeling of home have a way of appearing when we need them most.

With genuine appreciation for everyone who helped bring this world to life, and to you for joining us on this adventure.

Love,  
Erin



**Get on the Bus!**  
**lazoomtours.com**

There's no place like

Blu29  
Boutique



Visit us at 70 Charlotte Street Asheville NC  
[www.blu29.com](http://www.blu29.com) @ blu29



ATTORNEY AT LAW

CAROL GOINS



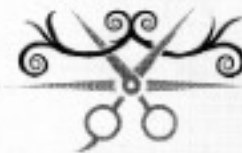
Divorce, Custody, Adoption  
Child Support, Landlord/Tenant  
Minor Traffic Offenses,

email: [attycgoins@aol.com](mailto:attycgoins@aol.com)

30 Choctaw Street, Ste. D  
Asheville, North Carolina 28801

828-252-2273 FAX: 828-785-1455

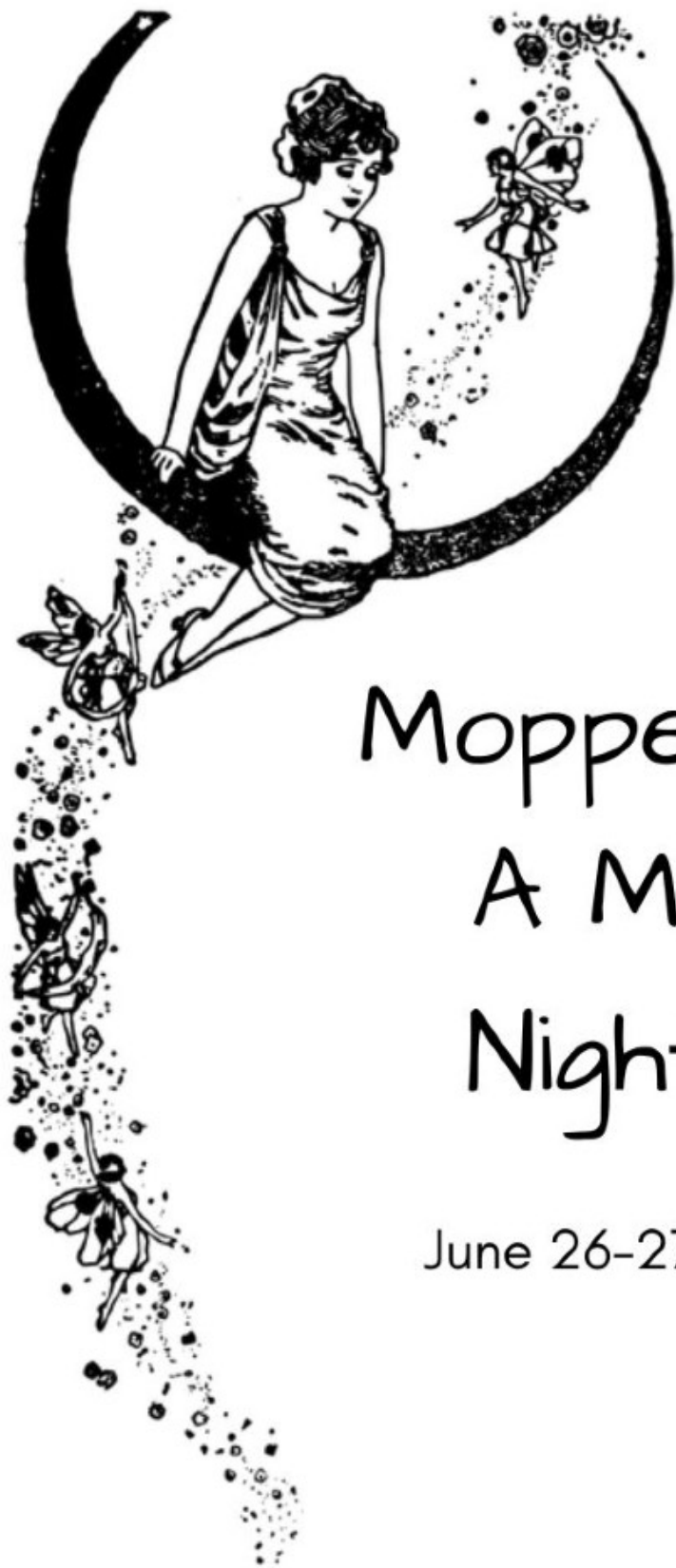
The Sharp One  
DESIGNER, COSTUMER & SEAMSTRESS  
Victoria Smith



My soul is fed with needle and thread!

[vsocostumes@yahoo.com](mailto:vsocostumes@yahoo.com)

828-545-8092



Moppets Present:  
A Midsummer  
Night's Dream

June 26-27 & July 3-5 at 5:00pm

# Moppets Present: Hamlet



7/31-8/1 & 8/7-8/9 AT 5:00PM

# Yes! I want to know about upcoming Montford Park Players events!

NAME: \_\_\_\_\_

ADDRESS: \_\_\_\_\_

CITY, STATE, ZIP: \_\_\_\_\_

TELEPHONE: \_\_\_\_\_

EMAIL: \_\_\_\_\_

How did you hear about us? (Check as many as apply)

Citizen-Times:     Calendar Item     Advertisement     Take 5

Mountain Xpress:  Calendar Item     Advertisement

Daily Planet:     Calendar Item     Advertisement

The Laurel:     Calendar Item     Advertisement

Other \_\_\_\_\_

Radio:     WCQS     98.1 The River

880 Local Edge Radio

Other \_\_\_\_\_

Website:

montfordparkplayers.org (Montford Park Players)

visitnc.com (our state tourism website)

exploreasheville.com

livewireasheville.com

mountainxpress.com

Other \_\_\_\_\_

Brochure:     Received in mail

Picked up at \_\_\_\_\_

# MONTFORD PARK PLAYERS

## BOARD OF DIRECTORS

### Class of 2028

Quinn Terry, 1st Term  
Audrey Kopp, 1st Term  
Emilie Soffe, 1st Term  
Robin Smith, 1st Term

### Class of 2026

Charles Umberger, Treasurer, 3rd Term

### Class of 2027

Honor Moor, Secretary, 2nd Term  
Tod Leaven, 2nd Term  
Cody Fox, Chair, 1st Term

### Youth Representative, Class of 2028

Daphodil Phillips-Sprague, 1st Term

### Principal Advisor

John Russell, Executive Director

## STAFF

### John Russell:

Executive Director

### Jason Williams:

Artistic Director & Resident Lighting Designer

### Deanna Braine Smith:

Production Manager & Resident Fight Choreographer

### Kristi DeVille:

Marketing Director & Resident Choreographer

### Trinity Smith Keel:

Head of Costumes

### Caitlin Marshall:

Production Stage Manager

### Walker Linkous:

Director of Facilities



## Kudos to Montford Park Players!

(L – R) 2017 Community Theatre of the Year Award, presented by North Carolina Theatre Conference  
2018 Mark R. Sumner Award to John Russell, presented by SETC for his contributions to outdoor theatre  
2025 Hardee Rives Award for the Dramatic Arts in North Carolina, presented by North Carolina Literary & Historical Association

# Special Thanks from the Administrative Staff:

The house staff and Board of Directors of MPP  
Mountain Xpress  
Asheville Department of Parks and Recreation  
UNC TV  
Asheville Area Chamber of Commerce  
Explore Asheville Convention and Visitors Bureau  
Bob Boeberitz Design  
Tempus Fugit Design  
Our Advertisers



“...FOR IN SUCH BUSINESS ACTION IS ELOQUENCE” COROLANUS



## Volunteer Engagement Opportunities

- ❖ Off Stage
  - Concessions & Gifts
  - Parking Attendants
  - Ushers
  - Workdays
- ❖ On Stage
  - Actresses & Actors
- ❖ Behind Stage
  - Techies
    - Assistant Stage Managers & Directors
    - Costumes
    - Lights & Sound
    - Props
    - Set Construction

ALL volunteers become **MPP MEMBERS** which means, among other activities, you get to **VOTE ON WHAT SHOWS WE PERFORM** when you attend our annual picnic.

If you're interested in joining NC's Longest Running Shakespeare Festival contact us today...

Email --- [info@montfordparkplayers.org](mailto:info@montfordparkplayers.org)

Phone --- (828) 254-5146



“Things won are done;  
joy's soul lies in the doing.”

*Troilus & Cressida*



**COME**

*join us*

FOR A

**DRINK**

AFTER THE

**SHOW**

**LITTLE JUMBO**

241 BROADWAY STREET  
LITTLEJUMBOBAR.COM

*Character*  
Study

797 HAYWOOD ROAD  
CHARACTERSTUDYBAR.COM

**OPEN DAILY AT 4:00 P.M.!**

**\$10 CLASSIC COCKTAILS EVERY DAY**