

Playbill

Montford Park
Players
52nd Season



MUSE OF FIRE: SHAKESPEARE'S WARS OF THE ROSES

PARTS THREE & FOUR HENRY IV (PARTS 1 & 2)

June 28-July 21, Friday-Sunday at 7:30pm, Hazel Robinson Amphitheatre, 92 Gay Street, Asheville, NC



This project receives support from Buncombe County through ArtsAVL, and the North Carolina Arts Council, a division of the Dept of Natural and Cultural Resources, with funding from the National Endowment for the Arts.

Veterans Law
Employment Law



www.leaven.law (828) 998-2900

We serve all Veterans,
all Employees,
all the time

HENRY V (in 3 Panels)



©2014 Mya Gosling

**Real Estate (like Shakespeare)
doesn't have to be confusing.**

Call us TODAY!



**THE MATT &
MOLLY TEAM**



KELLERWILLIAMS®

828.210.1697 | TheMattAndMollyTeam.com

THE MONTFORD PARK PLAYERS PRESENTS

Muse of Fire: Shakespeare's Wars of the Roses

Parts Three & Four – Henry IV, Parts 1 & 2

Written By

William Shakespeare

Directed by

Dr. George Brown

Callista Brown

Elizabeth DeVault

Caitlin Lane, Stage Manager

2024 Season Sponsored by

The Leaven Law Firm



CAST

PART I

PART II

Cody Fox	Edward (Ned) Poins/2nd Messenger/ John of Lancaster	Morton/Ned Poins/Bullcalf/Sir John Coleville
David Mycoff	Worcester/Soldier	Pedestrian/Shallow
Emilie Soffe	Earl of Westmorland/Peto	Earl of Westmorland/Peto/Pedestrian
Eric Vik	Henry IV	Henry IV/Lord Chief Justice
Gabby Bailey	Lady Percy/King's court/Messenger /Soldier	Lady Percy/Travers/Soldier/Davy/Court (coronation)
George Brown	Sir John Falstaff	Sir John Falstaff
Gina McDaniel	Glendower/Traveller/Soldier/Archbishop of york	Archbishop of york/Lady Northumberland/court (coronation)
Carly "Goober" Berdine	Earl of Douglas/ sheriff	Lord Hastings/Officer/ Gower
Karl Knierim	Sir Walter Blount/Gadshill/soldier	Lord Mowbray/Pistol
Kevin Norris	Northumberland/Traveler/Vintner/Messenger/Soldier/Sir Michael	Northumberland/Lord Chief Justice's Men/Vintner/Silence/Soldier /Harcourt/court (coronation)
Lauren Powers	Hostess Quickly/Soldier	Pedestrian/Hostess quickly/Soldier
Lucien (Luca) Hinton	Hotspur	Lord Bardolph/Sir John blunt/court (coronation)/Mouldy
Molly Wilson	Lady Mortimer/Doll/Soldier	Pedestrian/Doll/Soldier
Nick Toner	Prince Hal	Hal
Audrey Kopp	Guard/1st Traveller/Soldier	Pedestrian/Fang/Earl of Surrey/Soldier/attendant/court
Ena Farkas	Soldier	Falstaff's Page
Ry Albinus	Rumour the Presenter	Rumour the Presenter
Raj Bowers-Racine	Bardolph/Soldier	Pedestrian/Bardolph
Josh Luria	Mortimer/Traveller/Richard Vernon/Soldier	Pedestrian /Lord Chief Justice's Men /Earl of Warwick/Court (coronation)
Emily Bolinger	Guard/Servant/Francis/Soldier	Pedestrian/Snare/Francis/Feeble/Captain (Rebel)/Soldier/Attendant/Officer

PRODUCTION STAFF

George Brown -Director

Callista Brown - Director

Elizabeth DeVault - Director

Caitlin Lane - Stage Manager

Danielle Allen - Costumer

Eva Reitzig - Assistant Stage Manager

Deanna Braine Smith - Fight Choreographer

David Doersch - Fight Choreographer

Kristi DeVille - Dance Choreographer

TO OUR PATRONS

- Thank you for joining us this evening. We hope you enjoy our **once-in-a-generation** production of *Muse of Fire: Shakespeare's Wars of the Roses* as presented by The Montford Park Players, North Carolina's longest running Shakespeare Festival.
- There will be one twenty-minute intermission. Concessions will be available at the entrance to the amphitheatre. Many thanks to **The Matt & Molly Team** for sponsoring Shakespeare's Tavern, where you will find a delightful selection of wines and local beers on tap.
- We are pleased to accept all major credit/debit cards, cash, checks, Venmo and PayPal for your donations and concessions. One of our actors will be in the audience each night with a credit card reader for your convenience.
- Please turn the volume off on all cell phones and pagers to avoid distracting your fellow audience members.
- Flash photography is not permitted in the theatre.
- Canine companions will be given a treat at the concession stand.
- Unattended children will be given a double espresso, an energy drink and a free puppy .
- The Montford Park Players is going GREEN! Please help us conserve the environment by depositing your empty cans in the marked recycle bins.

Please feel free to contact us with any questions or comments by phone at (828) 254-5146, email at info@montfordparkplayers.org, or snail mail at Montford Park Players, PO Box 2663, Asheville NC 28802-2663. You can also follow us on Facebook (Montford Park Players) or on Twitter (@MontfordPlayers) or on Instagram (@montfordparkplayers).

WELCOME FROM THE EXECUTIVE DIRECTOR



On behalf of the board of directors and the members of The Montford Park Players, I want to personally welcome YOU to our **52nd season of free theatre**, sponsored by **The Leaven Law Firm!**

We're pleased to tell you that ALL our shows are free-of-charge – all season long! We at MPP envision a world in which everyone can experience exceptional live theatre, regardless of the ability to pay. Therefore, all of our shows are donation only. "Pay what we're worth." "Pay what you can." Some may even call it crazy. Call it what you will – and enjoy the show!

Here's our summer 2024 schedule:

- **Edward III:** May 10 – 26
- **Richard II:** May 31 – June 23
- **Henry IV:** June 28 – July 21
- **Henry V:** July 26 – Aug 25
- **Henry VI:** Aug. 30 – Sept. 22
- **Richard III:** Sept. 27 – Oct. 27
- **The Montford Moppets**, our youth theatre in residence, will be presenting two productions this summer:
The Winter's Tale July 5 – 7 and 12 – 14 at 5:00 pm, July 10 at 11:00 am
King Lear: August 2 – 4 and 9 – 11 at 5:00 pm, August 7 at 11:00 am

This will be a 25 week season with 75 scheduled performances, plus 14 performances by The Montford Moppets.

Making the most of your visit:

We want you to fully enjoy your experience with us. Feel free to bring a picnic and your favorite beverage, or purchase wine, sodas, local beers and snacks at our concession cart. Four-legged friends are always welcome! (There are treats for them at the concession stand, too!)

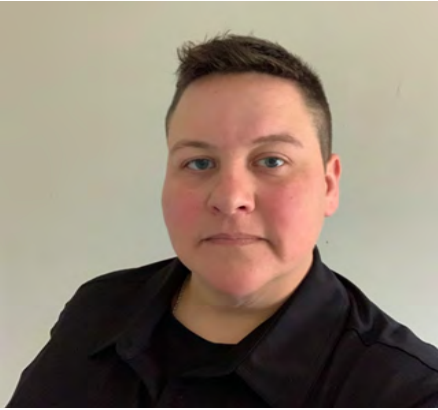
We are so grateful to our current donors, sponsors, and advertisers and YOU, our faithful audience, without whom we could not exist. Now sit back, relax, and be ready to laugh, cry, and be entertained as the curtain rises on another great production by the Montford Park Players.

John Russell
Executive Director



**MONTFORD PARK
PLAYERS**

MEET THE CAST & CREW



Carly (Goober) Berdine (Earl of Douglas in Part One, Lord Hastings in Part Two) Goober, or Carly if you prefer, got her start in theater in 2021 running sound and lights for *Living Dead in Denmark* and landed on the stage in *The Three Musketeers* the following year and hasn't looked back. Most recently she played King Edward in *Edward III* at the beginning of this season, as Annie Cannon in *Silent Sky*, and Tweedle Dum in *Alice in Murderland* to name a few. She is excited to continue her role in the Muse of Fire season in *Henry IV* with a great cast! Enjoy the show!



David Mycoff (Earl of Worcester in Part One, Justice Shallow in Part Two.) David first performed with the Montford Park Players as the Archbishop of York and Justice Silence in a 2004 production of *Henry IV, Part Two*. Since then, he has appeared in at least fifty-eight MPP productions, most recently earlier this

season as Lord Audley in *Edward III* and Lord Ross and the Bishop of Carlisle in *Richard II*. David has also acted with a number of other Asheville-area theater companies, including Different Strokes! Performing Arts Collective, Magnetic Theatre, Asheville Community Theatre, Hendersonville Theatre, Attic Salt Theatre Company, and Warren Wilson Theatre. He will appear later this season as Brackenbury in *Richard III*.



Karl Knierim is no stranger to the Montford Park Players as this is his 12th appearance. Some of his most recent roles include Macbeth, Demetrius, and Orlando in *The Asheville Shakespeare Experience*, Duke Orsino in *Twelfth Night*, and Caroline Bingley in *Pride and Prejudice*. In Karl's spare time, he enjoys playing guitar in *The Deathbots*, taking off his pants as narrator of the *Rocky Horror Music Show*, and yelling at computers.



Kevin Norris (Northumberland, Vintner, Sir Michael: Part One; Northumberland, Silence, and Harcourt: Part Two) could

not be more thrilled about "Muse of Fire 2024"! After acting as assistant stage manager for *Edward III*, he played Northumberland in *Richard II*. You may have seen him last summer as King Alonso in *The Tempest*. He has also portrayed The Player King in *Hamlet*, Rochefort in *Three Musketeers*, and King Duncan, the Porter, and Helicanus in MPP's repertory production of *Macbeth / Pericles*. His favorite roles include Scrooge and Old Joe in *A Christmas Carol*, Henslowe in *Shakespeare in Love* and Bottom in *A Midsummer Night's Dream*. Certainly, Northumberland will now join those roles as one of his—and he hopes one of your—favorites. His lovely and patient wife of thirty-nine years, Kathy, and all of YOU, make this possible through your support of live theatre! Thank you!



Cody Fox - Cody is delighted to be a part of the Montford Park Players this season. After participating in their productions of *Wendy & Peter* and *Alice in Murderland* during the 2023 season, he is back for more. Cody's journey in theater began in high school and continued through college, where he developed a love for the stage. This season, Cody looks forward to bringing his enthusiasm and experience to the season of Muse Of Fire. He is eager to engage with the community and share the magic of free theater, creating memorable experiences for all. For Cody, being part of the Montford Park Players is about cel-

ebating creativity, passion, and the joy of performing.



Lauren Powers is happily enjoying the creative fun of Asheville, her new hometown! She most recently appeared in Montford Park Players production of *Richard II* (Duchess of Gloucester/Gardener). Recently, she co-wrote and appeared in, *Debatable Love Songs: An Opinionated Musical Cabaret*. Other WNC shows include *Young Frankenstein: The Musical*, *Santa Claus Conquers the Martians*, and MPP's *Treasure Island* and *The Three Musketeers*. Lauren particularly fancies performing with her husband, Eric Vik.

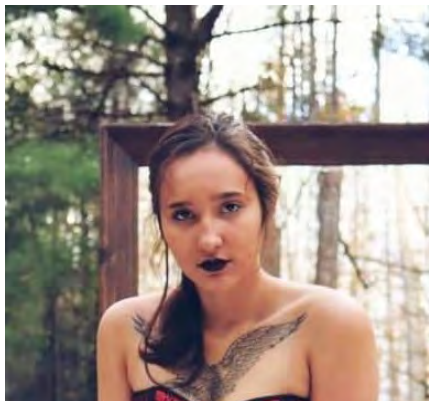


Eric Vik (King Henry IV/ Lord Chief Justice) Eric is stoked to be joining MPP for a third season. His MPP Shakespeare credits include Bolingbroke in *Richard II*, Malvolio in *Twelfth Night*, Polonius in *Hamlet* and Leonato in *Much Ado About Nothing*. He is also happy to share the stage with his lovely wife Lauren.

WAR OF THE ROSES FAMILY TREE



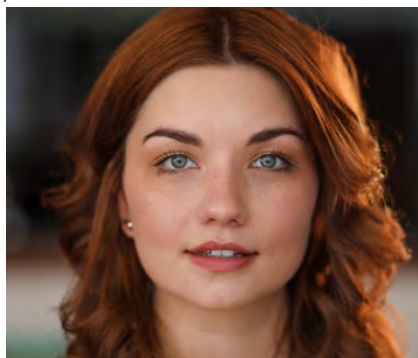
MEET THE CAST & CREW



Gabrielle Bailey she/her (Lady Percy, ensemble) Gabby is a WNC-based Actor, Director and Circus Performer. She has worked with multiple theatres in the area, including Attic Salt, The Magnetic, and Calliope Stages. You may recognize her from the Montford Stage as "Ophelia" in *Hamlet* ('22), or "The White Rabbit" in *Alice's Adventures in Murderland* ('23), as well as various other roles at the Hazel Robinson Amphitheatre. She is so excited to share the stage with so many talented folks, in a place where passion brings art to life. Let's get this Show on the Road.



Lucien Hinton is excited to be returning to the Montford Park Players. He is fresh off of the stage performing in *Matilda* at Asheville Community Theatre. Previous local performances include Hal in *Magnetic Theatre's New Queens Eve*, Lewis in *Pippin* at ACT, Antonio in Montford Park Player's *Twelfth Night*, and a standing position in the *Rocky Horror Music Show* as Rocky. Outside of theatre Lucien is a devoted dad to his human child as well as his menagerie of cats, dog, snakes, and plants. Lucien would like to thank his partners and daughter for always being so incredibly supportive of him, cheering him on, and encouraging him to be true to himself at every step.



Molly Wilson (Doll Tearsheet, Lady Mortimer, ensemble) - Molly is thrilled to join the Montford Park Players for the first time. Although she took a hiatus from the spotlight for a while, she has spent many years on stage as part of various troupes, including Capital City Shakespeare and The Irish Repertory Theatre. She has played Ophelia in *Hamlet*, Juliet in *Romeo and Juliet*, Hermia in *A Midsummer Night's Dream*, and Moira in *The Shaughraun*, among others. In her free time, Molly can usually be found writing, baking, or trying to wrangle her dog, Reginald.



Emily Bolinger (Francis, Snare, Feeble, Coleville, ensemble) - This is Emily's first show with the Montford Park Players. Her theatre experience goes all the way back to elementary school, though she spent more time doing tech through high school and college. After such a long time away from theatre, it's a joy to be back! Emily can also be seen singing in the Kol Simcha Choir at Congregation Beth HaTephila. She thanks her family for all their support, especially her cats, George and Ringo.



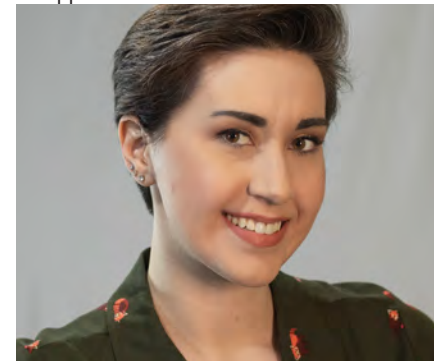
Audrey Kopp - This is Audrey's third season with Montford Park players, and her first Shakespeare performance ever. She is elated to work with such a creatively inspiring group of actors, directors and crew. She is grateful for the unending support of her husband, Bill, and Paco the wonder dog



Ryan Albinus Brooklyn-based actor and Western Carolina University alum, is thrilled to be back in the mountains and performing this Summer. Since graduating in 2020, Ry has had the privilege of performing in several shows, such as *Puck in A Midsummer Night's Dream*, Prior in *Angels in America*, Lady MacDuff/Porter in *Macbeth*, Mark in *Rent*, and the Light of the World track in *Godspell*. Beyond the stage, Ryan is also a skilled musician, having played, and currently preparing for several venues in New York City. Outside the realm of theatre, you can find Ryan curled up with a good book, taking their dog Jojo on walks, or absolutely devouring a calzone. Ryan is incredibly grateful for the unwavering love and support of their family, their partner, and their loyal dog, Jojo Dirt. Please enjoy the show!



Emilie Soffe is an Asheville-based actor and director with a focus in devised and experimental work. As a core member of live arts collective Piehole, Emilie has acted in and co-authored original works for theaters, galleries, and digital spaces, including collaborations with the LA-based Tender Claws in AR and VR: *Tendar* and *The Under Presents*. Piehole's most recent work was *Christmas Mountain*, a multimedia window-installation advent calendar that went up in the windows of the WNYC Greene Space. She's thrilled to be back on a stage again as part of this awesome, ambitious season with the iconic Montford Park Players and this very special group of humans! Big ups and love to husband Jeff and doggy brood Chopper and Peaches.



Gina McDaniel was last seen on the Montford stage in *Richard II* as Bushy and *The Duke of Surrey*, and is currently Gigi in Skysail Theatre's *"Interstellar Song Contest"*. Gina has also worked with The Magnetic Theatre, Hendersonville Theatre, and HART. When not on stage, Gina is a competitive West Coast Swing dancer, co-host of Hendersonville Westies, and is involved with social dance groups locally and in Greenville, SC.

Take your giving further.

CFWNC supports effective giving through grants, collaborations with funders, and deep partnerships with donors and nonprofits.

Generosity multiplied.

www.cfwnc.org



Photo by Travis Bordley

MEET THE CAST & CREW



Ena Farkas, 15, has been acting from a young age in many different NC theaters such as ACT, APAA, Montford Moppets and the Montford Park Players. Some of her favorite roles with this theater company are in *Wendy and Peter*. The roles she is most proud of are Jonas in *The Giver* and Mrs. White in *Clue*. She has also taken acting classes independently and at Asheville High School. She would like to thank her family for supporting her endeavors to be an actress.



Josh Luria is thrilled to be making his debut at MPP. Recent roles include *Silent Sky* as Peter Shaw (Multiverse/HART); *Young Frankenstein* as Inspector Kemp, *Rock of Ages* as Drew, *Sordid Lives* as Odell (Hendersonville Theatre); *The Crucible* as Reverend Hale (Tryon Shakespeare). He holds a BFA in Drama from NYU's Tisch School of the Arts, receiving his primary training from The Atlantic Theater Company's conservatory. After school,

he spent five years producing and directing new works for the theater company he founded with four colleagues, EBE Ensemble, primarily in downtown Manhattan. Outside of the theater you can often find him writing computer programs, gardening, traveling, or scuba diving. These performances are dedicated to the memory of Mandee Kulaga Parker, one of the kindest people to ever grace the stage.



Eva Reitzig is a Theatre Arts major about to enter her third year of college. Her previous credits include Props Master for *Newsies* and *The Seagull*, ASM for *White Christmas*, and deck crew for *Noises Off*. She's appeared onstage as Third Witch in *Macbeth* and Mrs. Peters in *Trifles*.



Nick Toner, 22, is a North Carolina based actor. He has studied acting

at Western Carolina University, as well as musical theatre at the Boston Conservatory at Berklee College of Music. Nick has recently appeared as Malcolm in the film *Days of August* by 1716 Digital, and also starred in *Cold Swallow*, which premiered at Asheville's own Cat Fly Film Festival this summer! Nick would like to thank his family, and his girlfriend, Grace for their undying support.



Raj Bowers-Racine is a Montford native who grew up scrambling around the amphitheater and play fighting his friends. 30 years later he seems to be doing the same thing. He can also be seen on stage performing absurdist dance routines with the Asheville Accidentals. 40 hours a week he slings books at Pack Memorial Library.



George H. Brown has worked in the professional and university theatre for over 30 years filling a gamut of positions from Director to Actor to Fight Choreographer. He has directed over 150 productions in theatres across the U.S., Caribbean and Europe. Regionally he has directed *Tartuffe*, *Hamlet*, and *King Lear* for the School of Stage and Screen at WCU where he serves as the Dean of the David Orr Belcher College of Fine and Performing Arts. He holds an MFA Degree in Directing from Penn State and a Ph.D. in Educational Leadership from Western Michigan University. George is very excited to be participating in this unique jaunt through history as told by Shakespeare. To the best of his knowledge, this highly ambitious theatrical season presenting the struggle over the English crown from the Battle of Crécy in 1346 to the Battle of Bosworth Field in 1485 has never been attempted before. To be part of that experience is the dream of a lifetime in the theatre. It's time to "Cry 'Havoc!' and let slip the dogs of war!"



Proudly the oldest continually operating
Summer theater in North Carolina

2024 MAINSTAGE SEASON JUNIOR PROGRAMMING

ALMOST, MAINE
June 28–July 7, 2024

- Summer Camps
- Classes
- Youth Productions

ORDINARY DAYS
August 9–18, 2024

APPALACHIAN PLAYWRITING FESTIVAL

VANITIES
September 6–15, 2024

September 21–22, 2024

WWW.PARKWAYPLAYHOUSE.COM | 828-682-4285

ATTORNEY AT LAW

CAROL GOINS



Divorce, Custody, Adoption
Child Support, Juvenile Law
Landlord/Tenant, Traffic Offenses,
Immigration Petitions, DACA
Renewals

email: attycgoins@aol.com

One Oak Plaza, Ste. 207
Asheville, North Carolina 28801
828-252-2273 FAX: 828-785-1455
Interpreter: Ana Fonseca 828-242-3449



DRIVE RECOGNITION FOR THE ARTS

Show your support for
North Carolina's arts everywhere you
go with an Arts NC license plate.



www.thecreativestate.org

MEET THE CAST & CREW



Elizabeth DeVault is an actor, singer, director, and voice artist in the Asheville area. She holds degrees in Vocal Performance (MM, U of SC) and Theatre (MA, Regent University). Recent performing credits include *Hamlet* (Rosencrantz) and *Wendy & Peter* (Mrs. Darling/Panther Protea) with Montford Park Players, as well as Montford's upcoming *Henry VI* and *Richard III* (Margaret). She has also performed with Ovation Theatre Arts Collective of Asheville, Magnetic Theatre, and Nemesis Theatre. As a stage director, recent projects include *Little Women*, *OTMA*, *The Magnetic Theatre One Act Festival* (2023), and *Young Frankenstein*. She will also be directing in the 2024 Appalachian Playwriting Festival with Parkway Playhouse. Elizabeth thanks her amazing family (pets, of course, included) and friends near and far for their support.

She simply cannot say enough about this wonderful cast and crew of "sweet beefs"; she is honored to have been a part of a directing team that lovingly sculpted an old story for a new audience



Callista Brown - Callista Brown is a professional director and actor based in Brooklyn, NY. She graduated in 2020 with her BFA in Musical Theatre from Western Carolina University and is delighted to return to this wonderful community for a short while this summer. She has studied Shakespeare all her life appearing on stages across the United States including a replica of the Rose Theatre! She extends heartfelt thanks to her brilliant partner, one of the most talented and selfless people she knows, and to her parents for their

generous hospitality and constant support of her career in the arts. Callista is so grateful that she is able to share the joy of her craft with others every single day.



Caitlin Lane (Stage Manager)- Caitlin got her start with the Montford Park Players in 2006 with *A Christmas Carol* and has been happy to call Montford her theatre home ever since. Some of her favorites with the Montford Park Players include: *A Midsummer Night's Dream*, *Peter Pan*, *Living Dead in Denmark* and *Alice's Adventures in Murderland*. Other credits include productions with: Dark Horse Theatre, Attic Salt Theatre Company, the Magnetic Theatre, and Multiverse Theatre.



Luscious

Luscious Liquor Ice Cream Catering

Ice Cream Socials & Pool Parties

Weddings & Corporate Events

Summertime's Celebrations

Premium Quality Spirits

Hot Fudge + Whiskey

Scrumptious Flavor

Decadent Texture

Sundae Funday

Ice Cream Bar

Minds Blown

Double Dip

Luscious

Scoop It

Boozy

Wow



lusciousliquoricecream.com



Montford Park Players

@MontfordParkPlayers



venmo

Scan this code to donate

PLAY SUMMARIES

PART ONE:

Henry IV, Part One explores the turbulent reign of King Henry IV after the bloody deposition of the previous ruler Richard II. Only a year later we find King Henry IV (Bolingbrook) dealing with internal strife and external threats to his throne from all fronts. To make matters worse, even those who helped his ascension to the throne have turned on him. Hotspur, a battle tested nobleman whose valor and impetuosity present a formidable challenge, begins to stir up rebellion at the suggestion of his uncle and father after being slighted by the king. Meanwhile, amidst this political turmoil, Prince Hal, the king's son, spends his days in taverns and engages in petty mischief with the roguish Sir John Falstaff, a lovable but morally dubious companion, and the eclectic patrons of the Boar's Head. These exploits are justified to the Prince as his plan is to be as debauched as possible so when he must ascend to throne his transformation appears all the more spectacular.

However, as the tension between the rebels and the crown escalates to all out war, Prince Hal begins to understand the weight of his royal responsibilities. Determined to prove his worth, he makes a declaration to his father to see the end of Hotspur or die himself. Intrigued by his proclamation, Bolingbrook enlists Hal to join him in battle against Hotspur and the rebel armies that have been recruited: The Scots led by the brutal Douglases, and the Welsh led by the mad magician Glendower. The play culminates in the famous Battle of Shrewsbury, where even the misfit figures of the tavern join Hal in arms, contemplating the future state of the country, and the true cost of what it means to be honorable.

PART TWO:

Henry IV Part Two continues the legendary saga of Prince Hal as he transitions from a wayward youth to one of England's greatest monarchs. We open with the country in turmoil, as civil war once again looms and King Henry IV grapples with both the pressures of the throne and his failing health. Prince Hal, who will later become King Henry V, is still carousing with his old, disreputable friends led by the now "honorable" and rich Falstaff. However, the weight of his impending ascension begins to press further on Hal who begins to see the faults within his motley crew at the Boar's Head. Meanwhile, rebel forces led by the Archbishop of York threaten the stability of the realm all while Bolingbrook's health deteriorates, exacerbating the monarchy's instability.

The Boar's Head crew, too, begins to squabble and decline. Sword fights, accusations of theft, and a slowly emptying bar show the tavern loses its spirit once Hal begins to turn away from it. Falstaff, still banking on a place in court once the throne is Hal's, begins to gather his flock and make plans for their new life of prominence. Over in Gaultree Forest, the Archbishop of York and his crew face quite a surprise from Prince John of Lancaster and Westmorland. Unfortunately, though the rebel threat is now solved, the king's death is now imminent. Hal considers his impending role as ruler of England and, in one final moment, gains the true love of the king. Hal is now ready to embrace his destiny as king... but not without an inevitable confrontation with Falstaff and the life Hal now chooses to leave behind. The play concludes with Hal's ascension to the throne as King Henry V and his transformation from lackluster scoundrel to brilliant ruler, at last his "reformation glittering o'er [his] fault."

HENRY IV PARTS I & II DIRECTING TEAM NOTE:

Hello, and welcome to Montford Park Players! We are thrilled to bring both parts of Henry IV to this incredible community of theater enjoyers. We hope you are excited to dive into a timeless tale of power, rebellion, and redemption with a little debauchery along the way.

For those of us groundlings who may never come close to royalty, Shakespeare's histories may lack immediate relevance. Squabbles over power and vengeance hardly elicit empathy from people who struggle to buy their groceries or stress about childcare. So, when beginning this project, our team sat down and asked, "Why this play? Why now?" After all, the rule of Henry IV began nearly 600 years ago; what could a modern American audience gain from this classic piece of work? After weeks of discussion and close readings, we begin to unravel the core of the story. Henry IV is, indeed, a rich tapestry of political intrigue, personal ambition, and the complexities of father-son relationships, blood related or not. The common folk of Medieval England keenly understood that their lives were at the very tip of the chaotic cracking whip of the king. We 21st century groundlings, too, can understand a sense of uncertainty and powerlessness as we watch history unfold before us. Yet, at the heart of this story is a young man, destined to rule, and his growth from a wayward youth to the paradigm of English monarchs. This journey mirrors the trials and triumphs we all experience in our paths to maturity. So, politics aside, Henry IV, Parts I & II is about transformation with the reminder that, no matter who we are or when we exist, we are all utterly human. Princes, usurpers, barkeeps, soldiers, and widows cling to the same need for purpose. Every life has a direction, a shape... and Hal, in his humanness, shows us that our shapes can change for the better.

Speaking of humans: This production is a testament to the incredible talent and dedication of our local artists. To mount two productions in the timeframe of what would normally be allotted for one has been nothing short of a Herculean feat. Not only that, many of these artists are involved in the ENTIRE first Henriad (Richard II, Henry IV Parts I & II, and Henry V). From the actors who breathe life into these historical figures, to the designers and crew who create the world they inhabit, every aspect of these productions has been crafted with passion and care. So thank your local theater artist today and please consider making a generous donation to Montford Park Players! Without them, Asheville's unique spirit of creativity that has inhabited this beautiful valley for generations will not exist.

Theaters such as Montford Park Players thrive on the support and spirit of its audience. We are grateful for your presence and your commitment to the arts in Asheville, especially community driven institutions such as this. Your support makes it possible for us to continue bringing classic and contemporary works to life, while fostering a space where creativity and community come together, and as always, for free.

Thank you for being a part of our incredible community and for sharing in the magic of Shakespeare. We look forward to welcoming you back to many more productions where stories old and new come to life, reminding us of our shared humanity and the power of storytelling.

FRAMER

FRUGAL

**Your Art.
Our Passion.**

Downtown AVL / Montford
95 Cherry St. North
(828) 258-2435

South Asheville
200 Julian Shoals Dr. Ste. 20
(828) 687-8533

frugalframer.com



BRAVO TO OUR DONORS

MAJOR FUNDERS

The Leaven Law Firm -
Tod & Jessica Leaven
North Carolina Arts Council
ArtsAVL

CORPORATE SPONSORS

The Frugal Frammer
Matt & Molly Team
Atlantic Bay Mortgage Group
Little Jumbo Bar
Luscious Liquor Ice Cream
Carol Goins, Attorney-at-Law
Community Foundation of
WNC
The Madness
Givens Gerber Park

FIRST FOLIO CIRCLE (\$5,000 - \$9,999)

Halstead Family Foundation

SHAKESPEARE SOCIETY (\$1,000 - \$4,999)

Barbara Cassat Keleher & Michael Francis Keleher Endowment Fund
Ashley Jones Bell
Jim & Mieko Thomson - Thomson Foundation
Christopher & Kelly Dunbar
Emily Gardner
Joshua S. Gettinger
Veronica & Jack Hunter
Stan Ingber and Laura Robbins
Virginia Luttrell
Mountaine Jonas
Henry LaBrun
Anna & Nathan Flax Foundation
William W. MacKay
Honor Moor and John Menkes
David Mycoff & Mei Mah
John Russell III
Wallace & Catherine Shealy

Matthew & Jewel Tavener
Charles & Winslow Umberger
Mr. & Mrs. Gary Warlen
Gregory & Marjorie Zack

PRODUCER'S CIRCLE (\$500 - \$999)

Bob and Margy Ayres
Lois Carlson & Jerome Mrowca
Nanette & Patrick Fund
Karen & Scott Dedman
David & Cat Doersch
Thomas & Cynthia Donahue
Ron & Nancy Edgerton
Heather & Jeremy Goldstein
Bonnie Hamrick
Hersk Family Fund
Frank Salvo and Dr. Ralph Coffey
Michelle Spiegel
Robert & Lauren Vik
Elaine & Stephen Wiesenfeld

DIRECTOR'S GUILD (\$250 - \$499)

Jeff & Jan Dektor
Jessica Frantz
Albert Gumpert
Veronica Hooks
John Kapitan
Dr. Jim and Lynn Karegeannes
Katie Langwell
Maria Lourdes Solares
Lydia Odell
Dr. Carol Reed and Barbara Phelan
Wilhelm Ritter
David Russell
William Scarborough
Neil Scheurich
Nichole Sumpter
Jason

PATRON (\$100 - \$249)

Kathleen Ayres
John Baldwin
Beth Bernhardt
Andrea Blankinship
Camile Bonnin
Stephen Boyer and Ruth Planey
Thomas Brettingen
David Broshar
Richard Brown
Jennifer Budzinski
Lauren Carlisle
Michael Cleveland and Maria-Grazia Nunzi
Barbara Cone
Mitchell Davis
Thomas (TJ) Derham
Andrew Donahue
Woodard Farmer
Thomas Fehsenfeld
Michael & Ava Fisher
Sandra Fournies
Bob & Kit Frank
Blaine & Cynthia Greenfield
Patricia & Tom Hearn
Rachel Helton
Donald Higley
Leslie & David Humphrey
Bun Intended
Karen & Larry Keating
Karissa Keen
Lise Klooppel
Bebe Landis
Samuel and Gail Lindenberg
Family Foundation
Travis Lowe
Ronda Mackey
Susan Mackintosh
Lois Markham
Vic & Laverne Marshall
Paul Masters
James & Linda McDonald
Alexandra & Terry McPherson
Margaret Miles

Laurie Percival Oates
Monica Peltz
Sally Pete
Judy & Ray Polinko
Marjorie Portwood & Geoffrey Belet
Roberta L. Powers
Adam Renzi
Julie Richardson
Kay Rogus
Andrew Runkle
Cheryl Small and Doug Anderson
Harriet C. Smith & Robert Hastings
Mary Smith
Ryan Stedwell
James Storey
Dr. Kenneth Tannenbaum
Courtland White
John & Beth Woodson

LEADING ROLE (UP TO \$99)

Olivia Olivia Abbey
Dianne Ables
Amber Acheson
Susan Adams
Jasper Adams
Brian Adler
Daniel Agnew
Jen Ahern
Laurel Ahrnsbrak
John Alberg
Marisa Albert Blake
Sarah Alberti
Natasha Alborno
Susan Alden
Kimberly Allen
Hollie Altman
Sarah Amedoro
Heidi Andersen
Kristen Anderson
Savannah Anderson
Ryan Anderson

BRAVO TO OUR DONORS

Matthew Anderson
Heather Angel
PayPal Giving Fund
Anonymous
Annamarie Arens
Kirsten Arnold
Cynthia Arrowood
James Ashe
Gregory Attaway
Donna Audino
Judy Avalon
Constance Avery-Clark
Jennifer Ayala
Frances Bailey
Rayne Bailey
Lisa Ball
James Ball
Sherwood Banner
Robin Barber
Sarah Barkan
Mary K Barnes Dart
Timothy Barnhill
Thomas Barnum
Sharon Tracey Barrett
Katie Barthel
Debi Bartholomew
Susan Beachum
Kari Beauchamp
Kristin Becker
Christina Bell
Erin Bell
Robyn Bellis
Garreett Bender
Jessica Bennett
Sara Bensman
Owen Bergeron
Gilberto Bernal
Suzanne Berryhill
Melissa Bertenthal
Christopher Bettis
Michelle Betz
Alex Biggs
Jacob Biggs
Stephanie Biziewski

Nicholas Black
Ethan Blackmore
Alexandra Bloch
Valinda Bolton
Tiffanie Boone
Jonathan Borotrager
Catherine Boshart
Mary Bost
Jacqueline Boughton
Brad Boughton
Steven Bowers
Sherry Boydston
William Branyon
Greg Braunstein DMD
Edward Breunig
Jessica Bridges
James Brinkmann
Anna Broome
Ronald Brown
Thomas Brown
Donna Brown
Theresa Brown
Elizabeth Brown
Aaron Brumo
Wendy Brunk
Mary K Bryson
Katherine Buchanan
Mary Beth Buchanan
Nancy Buchanan
Erik Buchmiller
Peter Buck
Angela Burden
Teddi Burnett
Martha Burrows
Charnel Burton
Abigail Cable
Sarah Calloway
Olivia Campbell
Justin Canterbury
Jordan Carder
Erin Cardot
Karl Carpenter
Nora Carpenter
Christine Carpenter

Brittany Carrico
Lindsay Carter
Andrew Cassaniti
John Catron
Callie Caudill
Stephanie Caudle
Melissa Causey
Julia Ceglenski
Amanda Chang
Meredith Chase
David Ciener
Tammy Cipriano
McKinley Clabaugh
Laura Clayton
Jane Clore
Philip Coates
Andreya Cobey
Julie Cochrane
Maureen Cochrane
Shannon Coe
Emily Coghlan
Anna Cohen
Olivia Cole
Rick Compton
Helen Conley
Kendall Cooke
Amanda Cooper
Carrington Cosby
Justine Cote
Brian Cottingham
Betsy Couzins
Vanessa Cowie
Mindy Cox
Jesse M Cox
Carol Lee Craig
Charles Cranford
Laura Crawford
Daniel Cropper
Elizabeth Cross
Lisa Crowe
Christina Cruz
Jeanne Cummings
Kristi Curtis
Jerry Daniel

Kimberly Dapron
Margaret Davis
Julyan Davis
Tavia Davis
Deborah Day
Laura Dean
Linda C Delery
Heather Dellinger
Ann Demeranville
Patrick Dennehy
Joan Dentremont
Helene DePalma
Julia Derouen
Eric Desmond
Susan DiMaggio
Anthony Dipaola
Robin Dobbs
James Donoghue
Julie Douglas
Nora Douglas
Margaret Downes
Dustin Drake
Karen Draper
Alaina Drawdy
Melissa Drennan
Lynn Dressler
Carol Duermit
Kyle DuFore
Rachel Durchslag
Silas Durocher
Amanda Dzimianski
Mitch Earle
Beth Eckstein
Karan Eifried
Elaine Eisenbraun
Mohannad Elhamod
Andi Elliot
Laurie Elliott
Amber Ellis
Anita A Ellzey
Kathleen English
Laura Eshelman
Karen Eske
Ronald Etzel

BRAVO TO OUR DONORS

Olivia Everal	John Gorden	Courtney Hinton	Derek Keevil
Jenny Greer Fares	Jeff Gottesman	Linda Hobson	Miriam Keil
Ellen Farmer	Elizabeth Graves	Claire M Hoffman	Meredith Keisler
Benjamin Farnham	Abigail Greene	Jo Hogan	Pamela Kellam
Marie Fayssoux	Carolyn Griffith	Joseph holbert	Todd Kelly
Lynn Feldman	Walter Glenn Grizzard	Sarah Hollowell	Kathleen Kelly
Carmen Fenwick	Amy Guenther	Vicky Holt	Gail Kent
Brian Ferree	Carlos Gutierrez	Kelly Hoogenakker	John Kent
Daniel Fishburn	Mary Beth	Natalie Hoover	Kyle Kenyon
Ashley Fisher-Tranese	Laurie Hagstrom	Christee Hope	Erin Kerr
Ryan Fleming	Spring Haigler	Rob Horn	Andrew Kersten
Derek Flowers	Caroline Haile	James Houlditch	Mary Kiene
Jeanne Flynn	Margaret Haines	Erin Howe	Hannah Kiker
Colleen Flynn	Amanda Hall and Robert Zeid	Kate Howell	A Glenn King
Terry Foley	Meredith Hamrick	Leslie Hudson	David L King
Laura Foote	Vincent Hamrick	Maury Hudson	Naomi King
John M Ford	Mihaly Mike Hangyas	Kerry Huebner	Lorena King
Brooke Fornea	Donna Hankins	Dorothy Hunter	Lauren Kingsley-Jones
Dr. Charles Foulks	Eliya Hanna	Michael Hunter	David Kirby
Ashlynn Freestone	Francesca Harmon	Nina Hutton	Michael Kirchmeyer
Jasmine Friedman	Carlisle Harper	David Hyton	Robert Klein
Karen Frye	Jordan Harris	Stephen Ingram	Robert Klink
Cecil Furr II	Allyson Harting	Bianca Ionescu	Nora Knapp
Mary Kate Galloway	Abbe Hartman	Pamela Jaccarino	Kristin Koenig
Brianna B Gardner	Richard Hartman	Jennifer Jackson	Bruce & Anna Koloseike
Kelly Garrison	Deborah Harvey	Andrea James	Robert Koop
Kathryn Garrison	Jennifer Hatcher	Sally Jenkins	Sara Koubek
Alexis Gault	Jenn Hatfield	Ivy Johnson	Michelle Kraut
David Gavlinski	Marian Hawkins	Martha Johnson	Madeleine Krebs
Elaine Gentry	Tyler Hawkins	Shane Johnson	Terris Kremer
Dawn Geoffrey	Leslie Hawkins	Eric Johnson	John Krill
Joyce Gersky	Kelly Hayes	Stuart Johnson	Joseph Kyle
Kirby Gibson	Edythe A Heilner	Audrey Jones	Laura LaFleur
Chris and Bonnie Gilbert	Abigail Helberg Moffitt	Erin Jones	Jeanne Lambert
Karen Gilbert	Sara Henderson	Paul Joyner	David Lamoree
Mary Gilliam	Jennifer Hendrickson	Elizabeth Juckett	James Lang
Dana Gillihan and Chris Repass	Jennifer Henley	Beth Juliar	Rebecca Langstaff
Amber Gilot	Sabrina Hennemeier	Carol Kaminski	Caprice Lantz
Diana Godal	Kristin Hessel	Zachary Kampf	Stephen Lapointe
Alison Gold	Cynthia Hessel	Yee Kao	Aneta Large
Emma Goldrick	Bonita Hester	Avery Kapitan	Joey Layne
Justin Goldstein	Steven Heulett	Linda Kean	Jonathan le Fae
Holly Goliwas	Krista Hill	John Keck	Frank LeClerg
Taylor Goodale	Elizabeth Hinsley	Chris Keeley	Molly Lee

BRAVO TO OUR DONORS

Meredith Lee	Woodward McKee	Jessica Newhouse	Lillie Potts
Barbara Leon	Rachel McKlveen	Donald Nicholson	Gail Powell
Erin Leonard	Christopher McMillan	Catherine Nix	Lauren Powers
Laura Lever	Melissa McMinn	Sharon Noel	Rebecca Powers
Amanda Levesque	Vanessa Mcnabb	Cina Noel	Kathleen Priest
Robert Levin	Paula Mcnabb	Esther Norton	Valerie Provost
Christine Levine	Philip McNiff	Stephanie Nusbaum	Richard Purcell
Cheyenne Lewis	Stephen Meisner	Bill O'Connell	Michael Ramon
Trevor Lewis	Rebecca Mellor	John O'Connell	Erich Rapp
Danielle Leyonmark	Andrea Melton	Susannah O'Donnell	Linda Ray
Stephanie Little	Jennifer Melton	Ana Ogle	Ellen Ray
Sara Little	Smith Meranda	Travis Olson	David Rayburn
Edgar Lockett	John Mercer	Linda O'Reilly	Megan Rayfield
Denise Lockett and David Honea	Jessica Merithew	Steven Ortiz	Chris Reisdorf
Mellie Logan	Donna Milam	Isabella Osborn	Christine Renz
Tara Looman	Georgena Millar	Emer O'Shaughnessy	Svijetlana Repic
William Lopez	Georgena Millar	Cheryl Overholt	Sandy Riccardi
Frank Lothschuetz	Sue Miller	Mary Owenby	Elizabeth Richardson-Royer
Suvara Lourme	Robin Miller	Anne Page	Emily Richter
Mary Lowery	Zachary Miller	Jennifer Park	Mary Ridderbusch
Jonathan Lucas	Heather Miller	Amanda Parks	Kelly Riedesel
John Luiz	Richard Mills	Megan Parris	Pamela Rietdorf
Linda Lutz	Patricia Minard	Alice Pate	Robert Rietz
Matthew Lutz	Noah Minner	Tara Patterson	Laura Rigoni
Julia Macintyre	Robert Miron	Evan Paulson	Jennifer Rish
Brandi Mackenzie	Kristi Mizen	Kerri Paulson	Dana Roberson
Kyle Maiorana	Steven Molinari	Kathryn Pearsall	Patricia Robertson
Anne Makeig	Kassandra Moore	Jennifer Pencille	Kimberly Rollins
Taylor Manley	Brendan Moorehead	Steven Pennington	Ryan Paige Rommel
Ray Mann	Renee Moran	Stephanie Pereira	Damien Roos
Elyse Marder	Cherie Morris and Randy Omark	Evan Perrey	Takira Rose
Pamela Martin	Michelle Morrison	Elizabeth Peterson	Julie Rosen
Regan Martin	Michelle Morrow	Cynthia Phelps	Alan Rosenberg
Brande Martin	Michael Mount	Tammy Philbeck	Rachel Rosner
Marta Martin	Barbara Mueller	Aubree Piepmeier	Sarah Royce
Fred Martin	Erin Mullen	Kenneth Pierce	William B Rudge
Charlee Martin	Philip Murphy	Sean Pierce	Dr. Annemarie Russell
Amelia Maxfield Chavez	Nancy Murrey-Settle	Stanley Piorkowski	Elizabeth & Mitchell Russell
Jessica May	John & Susan Mycroft	Eric Pitts	Karen Russell
Smith McAulay	Pia Nair	Lindsey Poli	Daniel Russo
Adam McCarthy	Tiffany Narron	Mary Poplin	Terrence Ryan
Jonathan McDaniel	Robert A Nelli	Stephanie & Fred Porter	Julis Sabotin
Allyson Mchale	Roz Neuhauser	Mary Ellen & Howard Porter	Ton Saeteurn
Gisela McHone	Stephen Newcomb	Lynne Porter	James Salaway

BRAVO TO OUR DONORS

David Saltzman
Jamie Samdahl
Allison Sampson
Adrienne Sandvos
Richard L Schell
Steven Schmidt
Stanley A Schmidt
Kari Schrader
Stephanie Schraven
Stephanie Schulz
Emily Schwabe
R Stephen Sedgwick
Noah Seidenberg
William Selden
Maggie Shackelford
Susan Shah
Robin Sheedy
Jessica Shinn
Susan M. Shope
Miranda Shropshire-Smith
Janet Silvers and Teri Tebelman
Annette Simmons
Della Simon
Rachel Simpson
Stephanie Simpson
Shaina Sjoberg
Denise Slicker
Susan Slover
Tracey Smith
Bonnie Smith
Katelind Smith
Gloria C Smith
Jody Smith
Charlotte Smith
Sara Smithson
Mairead Smitka

Forrest Smock
Christina Sobin
Tamara Sparacino
Chris Sparks
John Speas
Julie Speer
Laura Spencer
Michelle Spevak
Annie Spindler
Lynn Starr
Jill Steere
William Stejskal
Lily Stejskal
Richard Stevenson
Angela & Ernest Stevenson
Elizabeth Stiglets
Linda Stover
John Strickland
Katherine Sturbaum
Jacqueline Sullivan
Katherine Sullivan
Cheryl Suydam
Michael Tagliareni
Teresa Tahu
Duncan Tam
Jennifer Taylor
Jennifer Taylor
Angela Taylor
Stephanie Taylor
Kara Tebaldi
Marti Terry-Putdy
James Theiss
Craig Thornburg
Lorie Tola
Kristina Toombs
Alison Tosco

Christopher Toth
Eunice Townsend
Christine Troskey
Anthony Trussler
Claudia Turner
Todd Turner
Malissa Turney
Marie Turowski
Iftekhar Uddin
Robert Ulmer
Jeannine Van Sandt
Christina Vaughan
Linda Venable
Amanda Venturella
Lisa Vivolo
David Volrath
Michelle Vruwink
Heath Wade
Deborah Wadhams
William Walker
Kathleen Wallace
Robert Walling
Benjamin Walsh
Matthew Walsh
Luke Wander
Kelly Ward
Chrystal Ward
Katie Warren
Janice Warren
Craig Wassenberg
Candis Watterson
Virginia Waymouth
Mary (Melon) Wedick
Stephen Weinrib
Lillian Weis
Stephen Weissman

Claire Welborn
Jennifer Westrick
Michelle Weyers
Julia Wharton
Robert White III
Amanda Wilde
Angela Wilkers
Jeffrey Williams
Jennifer Williams
Carolyn Williams
Lisa Williams
Dinah Williams
Truett Williams
Robert Williams
Daniel Williams
Margret Williams
Ben Williamson
Mike Wilpizeski
Emily Wilson
Jenna Wilson
Nora Winsberg
Madelyn Wolf
Anna Wolfe
Stephanie Woodson
Brandy Wybersky
Min Xiao-Fen
Laura Yusko
Lisa Zanzig
Marilyn Zapf
Corey Zeigler
Jeffrey Zelenka
Deanna Zenn

..... (List Complete as of June 24, 2024. If we made a mistake, please let us know.)

We depend upon your generous donations to bring our shows to the mountains of WNC!
Donations can be made here:

Online: <https://www.montfordparkplayers.org/donate/>
Or by Venmo: @MontfordParkPlayers

By Check: Montford Park Players, PO Box 2663, Asheville NC 28802-2663



MPP MERCH



Please visit our Spreadshirt shop <http://shop.spreadshirt.com/montfordpark> for these and other great items!



Men's T-Shirt



Baby T-Romper



Baby T-Romper



Women's Premium T-Shirt



The Sharp One
DESIGNER, COSTUMER & SEAMSTRESS
Victoria Smith



My soul is fed with needle and thread!

vsocostumes@yahoo.com 828-545-8092

MPP MERCH



Women's V-Neck T-Shirt



Travel Mug



Women's T-Shirt



Men's Raglan Crewneck
Sweatshirt



Men's T-Shirt



Women's T-Shirt



Baby T-Romper



Toddler T-Shirt



Tote Bag



Tote Bag



Women's Hooded Sweatshirt



Womens Wideneck Sweatshirt

Yes! I want to know about upcoming Montford Park Players events!

NAME: _____

ADDRESS: _____

CITY, STATE, ZIP: _____

TELEPHONE: _____

EMAIL: _____

How did you hear about us? (Check as many as apply)

Citizen-Times: Calendar Item Advertisement Take 5

Mountain Xpress: Calendar Item Advertisement

Daily Planet: Calendar Item Advertisement

The Laurel: Calendar Item Advertisement

Other _____

Radio: WCQS 98.1 The River

880 Local Edge Radio

Other _____

Website:

montfordparkplayers.org (Montford Park Players)

visitnc.com (our state tourism website)

exploreasheville.com

livewireasheville.com

mountainxpress.com

Other _____

Brochure: Received in mail

Picked up at _____

MONTFORD PARK PLAYERS

BOARD OF DIRECTORS

Class of 2024

Honor Moor, Secretary, 1st Term
Tod Leaven, Chair 1st Term
Frank Salvo, Vice Chair 1st Term

Class of 2025

Stan Ingber 2nd Term

Class of 2026

Charles Umberger, Treasurer 3rd Term
Patricia Robertson, 1st Term
Aaron Ybarra, 1st Term

Youth Representative Class of 2026

Qiarra Martin 1st Term

Principal Advisor

John Russell, Executive Director

STAFF

John Russell:

Executive Director

Jason Williams:

2024 Artistic Director & Resident Lighting Designer

Deanna Braine Smith:

Production Manager & Resident FightChoreographer

Kristi DeVille:

Marketing Director & Resident Choreographer

Trinity Smith Keel:

Head of Costumes

Caitlin Lane:

Production Stage Manager

Walker Linkous:

Director of Facilities

2018 Community Theatre Award



**Montford Park
Players**
Asheville

Special Thanks from the Administrative Staff:

The house staff and Board of Directors of MPP
Mountain Xpress
Asheville Department of Parks and Recreation
UNC TV
Asheville Area Chamber of Commerce
Explore Asheville Convention and Visitors Bureau
Bob Boeberitz Design
Tempus Fugit Design
Our Advertisers

Special Thanks from the Production:

Dr. Corrie Green
Eliza Aldean Photography
NC Stage Company
Attic Salt Theatre Company
Todd Weakley at Reynolds High School
Mountain Graphics
Wedge Brewing

The awesome people who made the set happen, including
Eavr VW, head scenic painter
Conly Devereaux, assistant scenic painter
Gina Purri, head builder

Walker Linkous, Carly Berdine, and Cody Fox, dedicated set crew

Volunteers including Blaine Weiss, Robin Smith, Nick Toner, Kevin Norris, Jenny Luttrell, Jan Dixon, Jason Williams, Veris Wilde, Dakota Mann, Dana Gillihan, Nelly Bablumian, Sylvan, Hayley, Kai Strange

“...FOR IN SUCH BUSINESS ACTION IS ELOQUENCE” CORIOLANUS



Volunteer Engagement Opportunities

- ❖ Off Stage
 - Concessions & Gifts
 - Parking Attendants
 - Ushers
 - Workdays
- ❖ On Stage
 - Actresses & Actors
- ❖ Behind Stage
 - Techies
 - Assistant Stage Managers & Directors
 - Costumes
 - Lights & Sound
 - Props
 - Set Construction

ALL volunteers become **MPP MEMBERS** which means, among other activities, you get to **VOTE ON WHAT SHOWS WE PERFORM** when you attend our annual picnic.

If you're interested in joining NC's Longest Running Shakespeare Festival contact us today...

Email --- info@montfordparkplayers.org

Phone --- (828) 254-5146



“Things won are done;
joy's soul lies in the doing.”

Troilus & Cressida



To buy, or not to buy

THAT IS THE QUESTION

I'm here for all your home financing needs!

Whether you're a first time buyer or seasoned buyer, want to refinance or renovate, each loan closed is a donation to Montford Park Players.

Cody Fox

Sr. Mortgage Banker

828-380-9756

codyfox@atlanticbay.com



NMLS #1120052
Licensed in FL, NC, SC, TN



NMLS #72043
(nmlsconsumeraccess.org)



LITTLE JUMBO

HAS

PARKING

AT FIVE POINTS DINER

Plus great drinks and good times.
Stop by for a sip after the show.

241 Broadway • @littlejumbobar

See you there!